



Wire-Mounted Current Indicator

The **CR-45** series, Wire-Mounted Electrical Current Indicators provides an effective method of monitoring electrical current. The indicator is attached directly to a current-carrying wire. When the current exceeds the turn-on point, the LED will illuminate to indicate the presence of current.



CR-45 Current Indicators
(Shown Approx. Full Size)

Applications

- Monitor status of heater elements
- Observe remote loads
- Indicate phase loss
- Monitor motor operation

Features

- Self powered
- Red or green indicator
- Easy to install
- Supplied with plastic tie
- Bright yellow case for easy identification
- Panel mounting bracket available



MB-45 Panel Mounting Bracket
(Shown Approx. Full Size)

Specifications

Min. Turn-on Point

2 Amps for CR-45-R
2.5 Amps for CR-45-G

Indicating Range:

2 to 100 Amps (for CR-45-R)
2.5 to 100 Amps (for CR-45-G)

Max. Continuous Current:

100 Amps

LED Type:

T 1^{3/4} Diffused

LED Color:

Red or Green

Case Material:

Thermoplastic

Case Color:

Bright Safety Yellow

Weight:

.5 oz. (14.2 g)

Frequency:

50-60 Hz

Mounting Bracket Material:

Non-Magnetic Aluminum

WIRE PASSES	TURN-ON POINT		MAX. WIRE DIAMETER
	RED	GREEN	
1	2	2.5	.29
2	1	1.25	.14
3	.66	.83	.13
4	.5	.62	.12
N	2÷N	2.5÷N	

Internet Resources <http://www.crmagnetics.com/>

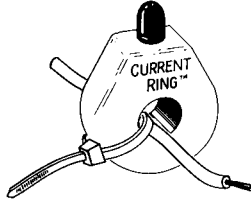
- Indicator Selection Guide: ind.html
- Application Sheet: pdf/ancr450-1.pdf
- Pricing: pricing/cr45.html

Part Numbers

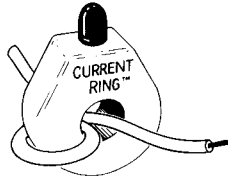
- CR45** - Current Indicator with (Red or Green) LED
 R-Red Indicator
 G-Green Indicator
MB-45 Panel Mounting Bracket for CR-45

Wire-Mounted Current Indicator

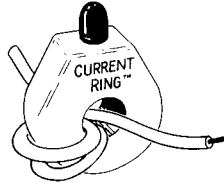
Typical Installation



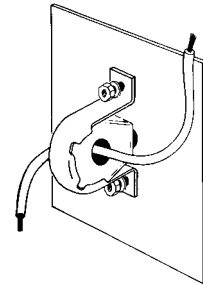
One-Wire Pass



Two-Wire Passes

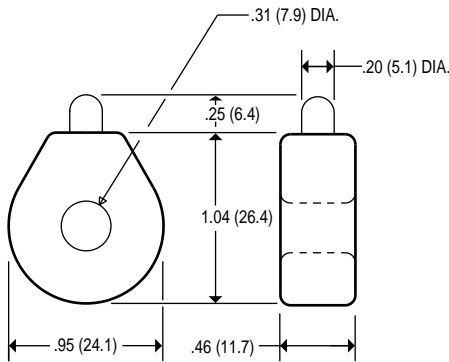


Three-Wire Passes

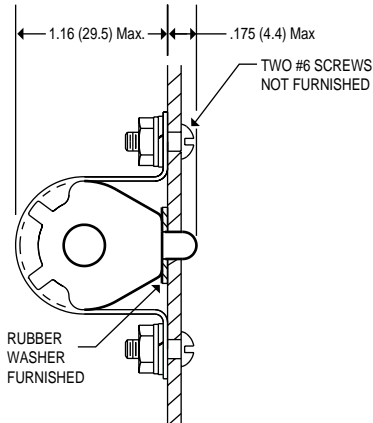


MB-45 with CR-45

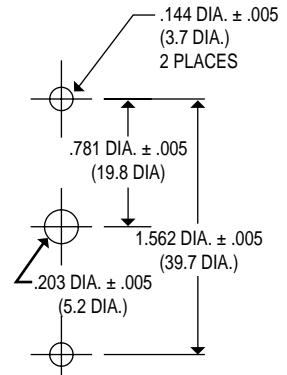
Outline Drawings



CR-45

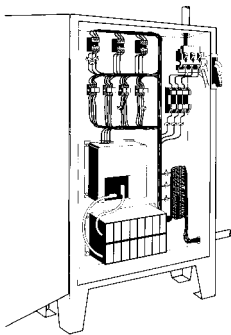


MB-45

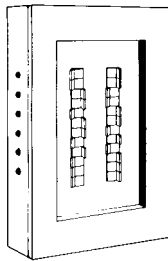


Recommended Mounting Hole Pattern

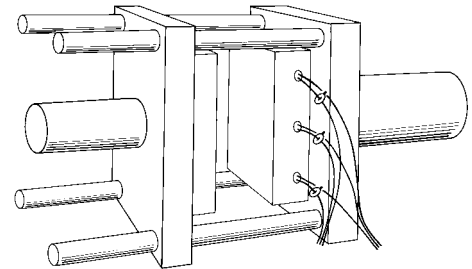
Typical Application



Load Center



Control Panel



Process Heating